

VEMID DOO

Vinorača, Jagodina

Tel: +381 64 1181986

e-mail: vemiddoo@gmail.com

PIB: 110049362

Matični broj: 21290238



AL/CU

SPOJNI PRIBOR

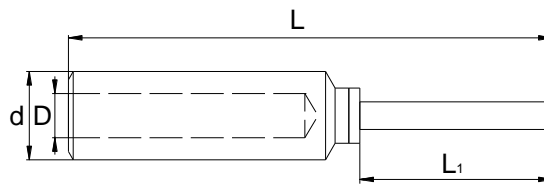
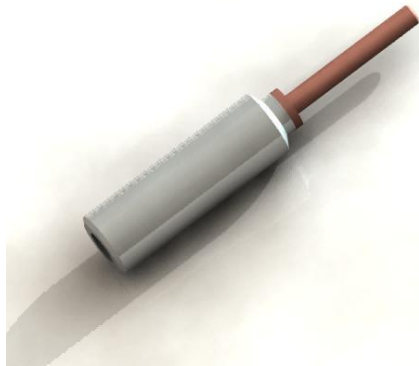
KATALOG 2018

Mart 2018.

SADRŽAJ

Bimetalni kontaktni završetci	1
Bimetalne papučice Al-Cu	2
Bimetalne čaure Al-Cu	3
Reference	6

Bimetalni kontaktni završetci

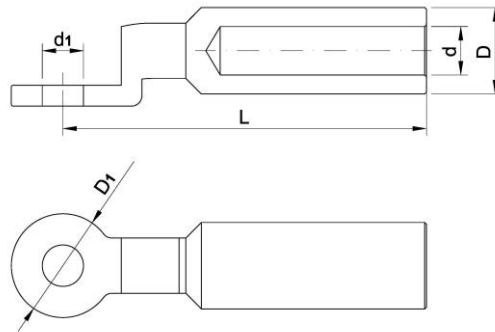
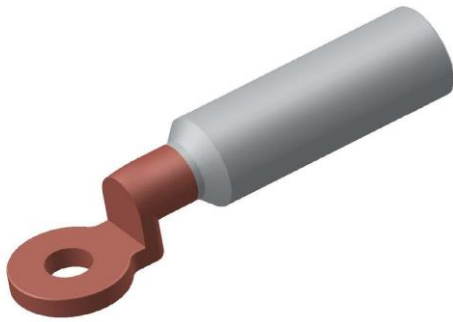


Tip	Presek [mm ²]	Glava Ø [mm]	Dimenzije [mm]			
			d	D	L ₁	L
BAC25	25	6	16.0	6.8	20	58
BAC35	35	7	16.0	8.0	22	71
BAC50	50	8	16.0	10.0	25	74
BAC70	70	10	20.0	11.5	30	87
BAC95	95	12	23.0	13.2	33	91
BAC120	120	12	25.0	15.0	38	97
BAC150	150	12	25.0	16.5	38	108
BAC185	185	14	28.0	18.5	44	116

Napomena:

Moguća je izrada AL/Cu kontaktnih završetaka u drugim poprečnim preseccima i dimenzijama u slučaju specifičnih zahteva kupca.

Bimetalne papučice Al-Cu

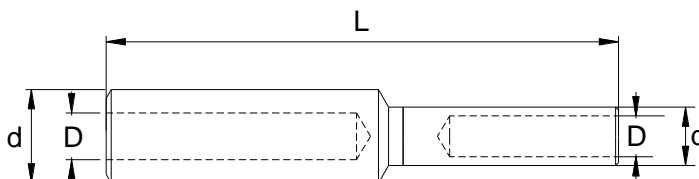


Tip	Presek [mm ²]	Dimenzije [mm]				
		D	d	L	D ₁	d ₁
LAC16	16	12	6	67.5	20	Sve dimenzije otvora prema zahtevu kupca
LAC25	25	12	6.8	67.5	20	
LAC35	35	14	8	76.5	20	
LAC50	50	16	9.8	76.5	25	
LAC70	70	18	11.3	84.5	25	
LAC95	95	22	13.2	90.5	30	
LAC120	120	25	14.7	92	30	
LAC150	150	25	16.3	107.5	30	
LAC185	185	28	18.3	107.5	30	
LAC240	240	32	21	118.5	35	

Napomena:

Moguća je izrada AL/Cu kontaktnih papučica u drugim poprečnim presecima i dimenzijama u slučaju specifičnih zahteva kupca.

Bimetalne čaure Al-Cu



Tip	Presek [mm ²]		Dimenzije [mm]				
	Al	Cu	Al		Cu		L
			d	D	d	D	
JAC1010	10	10	10	5.0	6	4.5	55.0
JAC1016	10	16	10	5.0	8	5.4	61.0
JAC1610	16	10	12	6.0	6	4.5	55.0
JAC1616	16	16	12	6.0	8	5.4	61.0
JAC2510	25	10	12	6.8	6	4.5	55.0
JAC2516	25	16	12	6.8	8	5.5	61.0
JAC2525	25	25	12	6.8	10	7	61.0
JAC2535	25	35	12	6.8	12	8.2	61.0
JAC2550	25	50	12	6.8	14	10	72.0
JAC3516	35	16	14	8.0	8	5.5	71.0
JAC3525	35	25	14	8.0	10	7	71.0
JAC3535	35	35	14	8.0	12	8.2	71.0
JAC3550	35	50	14	8.0	14	10	77.0

Tip	Presek [mm ²]		Dimenzije [mm]				
	Al	Cu	Al		Cu		L
			d	D	d	D	
JAC5016	50	16	16	9.8	8	5.5	71.5
JAC5025	50	25	16	9.8	10	7	71.5
JAC5035	50	35	16	9.8	12	8.2	71.5
JAC5050	50	50	16	9.8	14	10	77.5
JAC7016	70	16	18	11.2	8	5.5	79.0
JAC7025	70	25	18	11.2	10	7	79.0
JAC7035	70	35	18	11.2	12	8.2	79.0
JAC7050	70	50	18	11.2	14	10	85.0
JAC7070	70	70	18	11.2	16	11.5	86.0
JAC7095	70	95	18	11.2	18	13.5	95.0
JAC9516	95	16	22	13.2	8	5.5	79.0
JAC9525	95	25	22	13.2	10	7	79.0
JAC9535	95	35	22	13.2	12	8.2	79.0
JAC9550	95	50	22	13.2	14	10	85.0
JAC9570	95	70	22	13.2	16	11.5	87.0
JAC9595	95	95	22	13.2	18	13.5	95.0
JAC95120	95	120	22	13.2	20	15.5	95.0
JAC12035	120	35	25	14.7	12	8.2	81.0
JAC12050	120	50	25	14.7	14	10	87.0
JAC12070	120	70	25	14.7	16	11.5	89.0
JAC12095	120	95	25	14.7	18	13.5	97.0
JAC120120	120	120	25	14.7	20	15.5	97.0

Tip	Presek [mm ²]		Dimenzije [mm]				
	Al	Cu	Al		Cu		L
			d	D	d	D	
JAC15016	150	16	25	16.3	8	5.4	91.5
JAC15025	150	25	25	16.3	10	6.8	91.5
JAC15035	150	35	25	16.3	12	8.2	91.5
JAC15050	150	50	25	16.3	14	10	98.5
JAC15070	150	70	25	16.3	16	11.5	99.5
JAC15095	150	95	25	16.3	18	13.5	107.5
JAC150120	150	120	25	16.3	20	15.5	107.5
JAC150150	150	150	25	16.3	22	17	124.0
JAC18550	185	50	28	18.3	14	10	99.0
JAC18270	185	70	28	18.3	16	11.5	100.0
JAC18595	185	95	28	18.3	18	13.5	108.0
JAC185120	185	120	28	18.3	20	15.5	108.0
JAC185150	185	150	28	18.3	22	17	113.0
JAC185185	185	185	28	18.3	25	19	116.0
JAC24050	240	50	32	21.0	14	10	110.0
JAC24070	240	70	32	21.0	16	11.5	111.0
JAC24095	240	95	32	21.0	18	13.5	119.0
JAC240120	240	120	32	21.0	20	15.5	119.0
JAC240150	240	150	32	21.0	22	17	124.0
JAC240185	240	185	32	21.0	25	19	127.0
JAC240240	240	240	32	21.0	28	21.5	128.0

Napomena:

Moguća je izrada AL/Cu čaura u drugim poprečnim presecima i dimenzijama u slučaju specifičnih zahteva kupca.

Reference

- Učešće u programu ranog razvoja na projektu "Nova tehnologija koja unapređuje troškovnu efikasnost konektora u energetske industriji" – Fond za inovacionu delatnost, 2017.

